

How to update my drive?

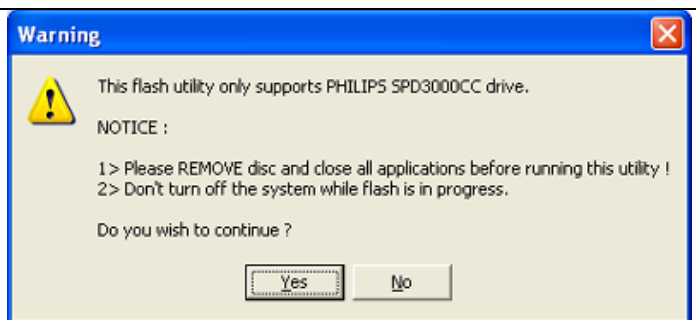
This manual shows you how to
update your drive.

Philips Consumer Lifestyle
Version 04

PHILIPS

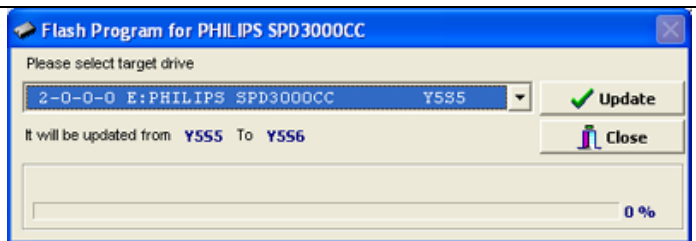
1

Start the Update Tool you downloaded.
Click "Yes"



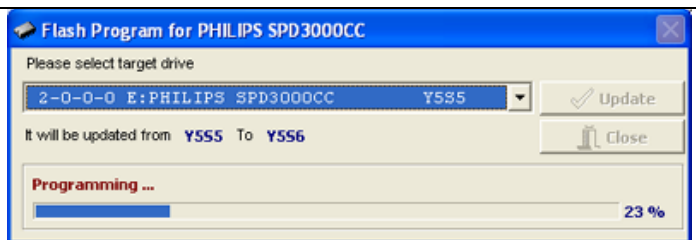
2

Choose the drive to update and click
"Update".



3

Your drive is being updated.
Do not interact with the system.



4

Your drive has been updated.
Click "OK" to exit the update program.

